

\$1,390,000 - 8701 Midnight Pass Road 407a, SARASOTA

A4607317

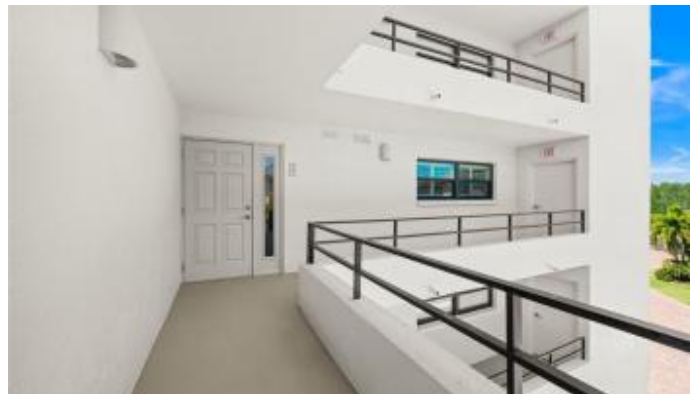
\$1,390,000

3 Bedroom, 3.00 Bathroom, 1,922 sqft

Residential on 0 Acres

TURTLE BAY SEC 2, SARASOTA, FL

With an incredible view of the Intracoastal Waterway, two large lanais, and 1,922 interior square footage, this impeccably remodeled three-bedroom end-unit on the fourth floor features high end finishes, all new windows, hardwood floors, and plantation shutters in the living areas and two bedrooms, crown molding, three custom baths, and multiple closets with organizers. The sellers installed all new impact-resistant windows throughout the condominium as well as in the large enclosed lanai off the living room where they have year-round use and enjoyment of spectacular sunrises over the water. In 2019, the kitchen was upgraded with GE appliances and a water filter system. Additionally, the residence was repainted and new light fixtures put in, bedroom blinds added (2023), and the HVAC replaced (2020). The private enclosed under-building garage has been updated with Amish work-work throughout, including storage cabinets and work bench. This Bayside community of Turtle Bay on the south end of world-famous Siesta Key has lush landscaping, a newly updated fishing pier, and a boat dock with slips available on a first-come, first-serve basis, kayak launch, heated pool, clubhouse, grill and picnic area, lighted tennis courts, and pickleball courts. And just across the street, one can enjoy the deeded beach access to the sparkling Gulf waters and the most gorgeous sunsets.



Built in 1980

Essential Information

MLS® #	A4607317
Price	\$1,390,000
Bedrooms	3
Bathrooms	3.00
Full Baths	3
Square Footage	1,922
Acres	0.00
Year Built	1980
Type	Residential
Sub-Type	Condominium
Style	Contemporary
Status	Active

Community Information

Address	8701 Midnight Pass Road 407a
Area	Sarasota/Crescent Beach/Siesta Key
Subdivision	TURTLE BAY SEC 2
City	SARASOTA
County	Sarasota
State	FL
Zip Code	34242

Amenities

Amenities	Cable TV, Clubhouse, Elevator(s), Lobby Key Required, Maintenance, Pickleball Court(s), Recreation Facilities, Shuffleboard Court, Spa/Hot Tub, Storage, Tennis Court(s), Vehicle Restrictions, Wheelchair Access
Parking	Assigned, Deeded, Garage Door Opener, Ground Level, Under Building
# of Garages	1
View	Garden, Water
Is Waterfront	Yes
Waterfront	Intracoastal Waterway

Interior

Interior Features	Built-in Features, Ceiling Fans(s), Crown Molding, Elevator, Living Room/Dining Room Combo, Primary Bedroom Main Floor, Solid Surface Counters, Solid Wood Cabinets, Split Bedroom, Walk-In Closet(s), Window Treatments
-------------------	--

Appliances	Cooktop, Dishwasher, Disposal, Dryer, Electric Water Heater, Microwave, Range, Refrigerator, Washer, Water Filtration System
Heating	Central, Electric
Cooling	Central Air
# of Stories	6

Exterior

Exterior Features	Balcony, Irrigation System, Lighting, Outdoor Grill, Private Mailbox, Sliding Doors, Storage, Tennis Court(s)
Lot Description	Landscaped, Street Brick, Paved, Private
Roof	Membrane
Foundation	Slab

School Information

Elementary	Phillippi Shores Elementary
Middle	Brookside Middle
High	Sarasota High

Additional Information

Date Listed	April 15th, 2024
Days on Market	35
Zoning	RMF3

Listing Details

Listing Office	Premier Sothebys Intl Realty
----------------	------------------------------

All listing information is deemed reliable but not guaranteed and should be independently verified through personal inspection by appropriate professionals. Listings displayed on this website may be subject to prior sale or removal from sale; availability of any listing should always be independently verified. Listing information is provided for consumer personal, non-commercial use, solely to identify potential properties for potential purchase; all other use is strictly prohibited and may violate relevant federal and state law. Listing data comes from My Florida Regional MLS DBA Stellar MLS.

Listing information last updated on May 20th, 2024 at 7:34pm EDT