

\$509,000 - 212 Pass Key Road 212, SARASOTA

A4646144

\$509,000

2 Bedroom, 2.00 Bathroom, 1,108 sqft

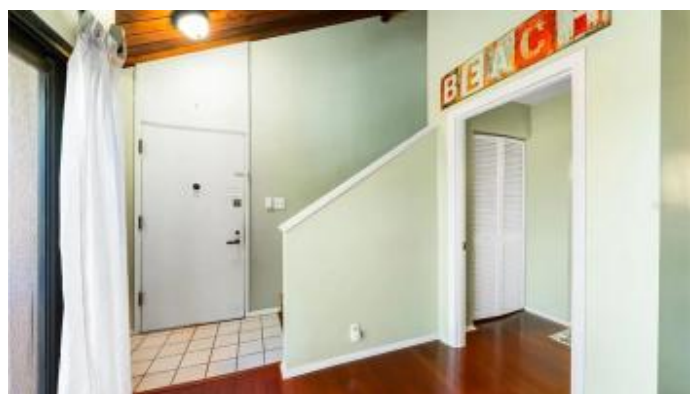
Residential

SANDY COVE II, SARASOTA, FL

This is the One! *Rarely Available 2bed/2bath Condo located in Sandy Cove II*Second Floor Unit with Your Own Exterior Entrance and Water Views from Your Living Room! Own a Tree top Condo on the #1 beach, Siesta Key*Pet friendly*Open plan with Cathedral ceilings*Sandy Cove II offers access to one of the best fishing piers and waterfront areas on Siesta Key*Designed by Frank Smith from the Sarasota School of Architecture*The master bedroom is on the first level with its own sliding doors that open to a side balcony*The Living Room has full views of the Gulf*The second bedroom is located on the second level with it's own bathroom*Located on the second level is a bonus room* Newer AC system which is still under warranty*Hurricane-rated/high end sliding glass doors which also feature window tint for energy savings*This condo is a short (less than .5 miles) walk or bike ride to the shops and restaurants of Siesta Village*The community features a clubhouse with a screened porch that can be used for private parties and an apartment for visiting guests*There is bike, canoe, kayak, & paddle board storage available & this property has a separate assigned storage unit as well*Sandy Cove II is truly an unique complex located on the North end of the Key*

Built in 1973

Essential Information



MLS® #	A4646144
Price	\$509,000
Bedrooms	2
Bathrooms	2.00
Full Baths	2
Square Footage	1,108
Year Built	1973
Type	Residential
Sub-Type	Condominium
Status	Active

Community Information

Address	212 Pass Key Road 212
Area	Sarasota/Crescent Beach/Siesta Key
Subdivision	SANDY COVE II
City	SARASOTA
County	Sarasota
State	FL
Zip Code	34242-1615

Interior

Interior Features	Cathedral Ceiling(s), Ceiling Fan(s), High Ceilings, Open Floorplan, Vaulted Ceiling(s), Walk-In Closet(s)
Appliances	Range, Refrigerator
Heating	Electric
Cooling	Central Air
# of Stories	2

Exterior

Exterior Features	Sliding Doors
Roof	Tile
Foundation	Slab

Additional Information

Date Listed	March 28th, 2025
Days on Market	199
Zoning	RMF2

Listing Details

All listing information is deemed reliable but not guaranteed and should be independently verified through personal inspection by appropriate professionals. Listings displayed on this website may be subject to prior sale or removal from sale; availability of any listing should always be independently verified. Listing information is provided for consumer personal, non-commercial use, solely to identify potential properties for potential purchase; all other use is strictly prohibited and may violate relevant federal and state law. Listing data comes from My Florida Regional MLS DBA Stellar MLS.

Listing information last updated on October 14th, 2025 at 9:12am EDT